



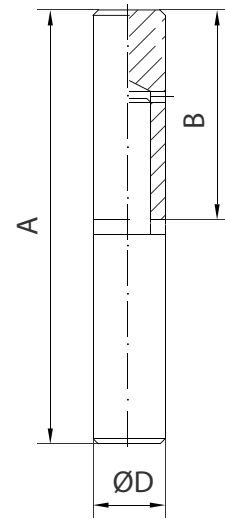
### Perno torneado con arandela de latón

(Familia 26)

(AISI 303)

Perno torneado com anilha de latão  
Round profile hinge with brass washer  
Paumelle profil rond (rondelle en laiton)

Cod.	Medidas Dimensions	A	B	ØD		
86	8x50	50	24	8	20	0,24
79	10x60	58	28	10	20	0,71
84	12x70	68	33	12	20	1,14
80	14x80	78	38	14	14	1,25
81	16x100	98	48	16	15	2,18
82	18x110	108	53	18	12	2,37
83	20x120	118	58	20	10	2,80
85	25x150	148	73	25	6	3,25
286	30x150	148	73	30	4	2,75





### Perno torneado con rodamiento axial

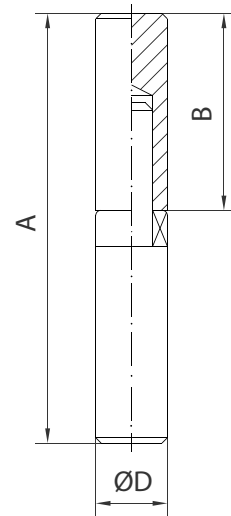
(Familia 26)

(AISI 303)

Perno torneado com rolamento axial  
Round profile hinge (with axial bearing)  
Paumelle profil rond (roulement axial)



Cod.	Medidas Dimensions	A	B	ØD		
8012	AX 14x80	78	37	14	14	1,25
8111	AX 16x100	98	45	16	15	2,18
831	AX 20x120	118	55	20	10	2,85
851	AX 25x150	148	70	25	6	3,25





### Perno torneado con arandela de latón

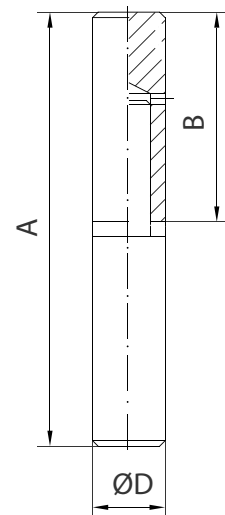
(Familia 26)

(AISI 316)

Perno torneado com anilha de latão  
Round profile hinge with brass washer  
Paumelle profil rond (rondelle en laiton)



Cod.	Medidas Dimensions	A	B	ØD		
280	12x70	68	33	12	20	1,14
281	16x100	98	48	16	15	2,18
282	20x120	118	58	20	10	2,80
283	25x150	148	73	25	6	3,25

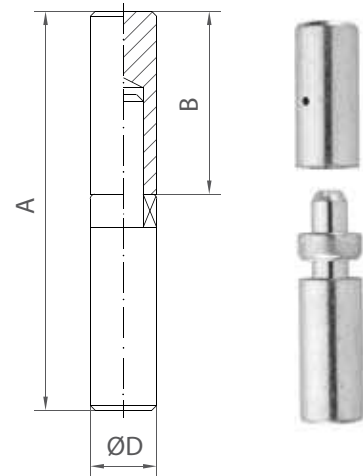
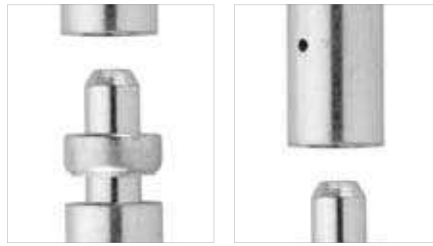




## Perno torneado con rodamiento axial

(Familia 26)

(AISI 316)

Perno torneado com rolamento axial  
 Round profile hinge with axial bearing  
 Paumelle profil rond (roulement axial)



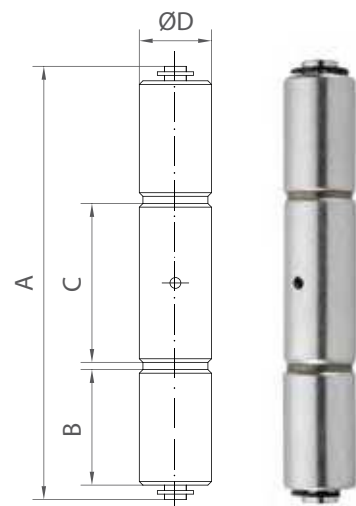
Cod.	Medidas Dimensions	A	B	ØD		
81110	AX 16x100	98	45	16	15	2,18
284	AX 20x120	118	55	20	10	2,85
285	AX 25x150	150	70	25	6	3,25



## Perno tres cuerpos

(Familia 24)

(AISI 303)

Perno três corpos  
 Three sections hinge  
 Paumelle trois corps



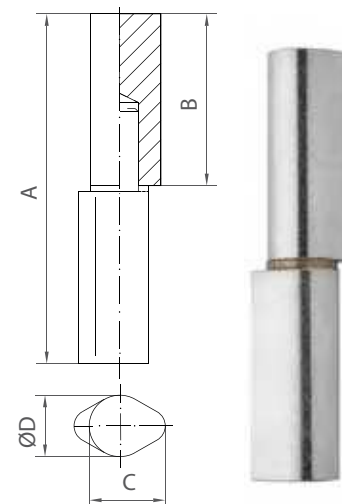
Cod.	Medidas Dimensions	A	B	C	ØD		
510	16x100	100	27	35	16	15	2,18
511	20x120	118	32	42	20	10	2,72
512	25x150	150	40	56	25	6	3,25



## Perno gota con arandela de latón

(Familia 33)

(AISI 316)

Perno gota com anilha de latão  
 Drop profile hinge with brass washer  
 Paumelle profil goutte (rondelle en laiton)



Cod.	Medidas Dimensions	A	B	ØD	C		
709	14x80	78	38	14	17	15	1,46
710	16x80	78	38	16	20	15	2,00
711	16x100	98	48	16	20	15	2,37
712	20x120	118	58	20	25	10	2,92
713	20x150	148	73	20	25	8	3,19
714	23x150	148	73	23	29	6	3,15
715	23x180	178	88	23	29	5	3,12

- Pernos de 18 mm en adelante todos con engrasador.
- Pernos a partir de 18 mm todos com engraxador.
- From 18 mm all the hinges have oiler.
- A partir de 18 mm toutes les paumelles avec graisseur.



# INOX-SS

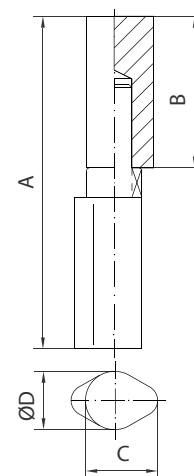
## Pernio gota con rodamiento axial

(Familia 33)

(AISI 316)

Perno gota con rolamento axial inox  
Drop profile hinge with axial bearing  
Paumelle profil goutte avec roulement axial

Cod.	Medidas Dimensions	A	B	ØD	C		
720	AX 14x80	79	37	14	17	15	1,47
721	AX 16x80	78	35	16	20	15	1,50
722	AX 16x100	98	45	16	20	15	2,49
723	AX 20x120	118	55	20	25	10	2,83
724	AX 20x150	148	70	20	25	8	2,88
725	AX 23x150	148	70	23	29	6	3,15
726	AX 23x180	178	85	23	29	5	3,05





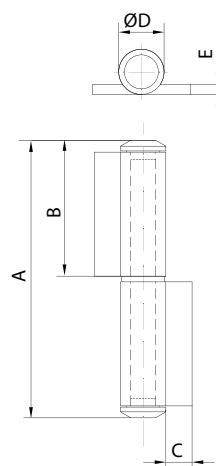
## Pernio pala tapón

(Familia 45)

(AISI 303- 304L)

Dobradiça em forma de "pá" com tampa  
Flag hinge  
Charnière à pelle

Cod.	Medidas Dimensions	A	B	C	ØD	E		
602	12x80x2 lzda Left-Gauche	84	41	13	12	2	18	1,60
603	12x80x2 Dcha Right-Droite	84	41	13	12	2	18	1,60
604	18x100x3 lzda Left-Gauche	104	51	17	18	3	12	3,06
605	18x100x3 Dcha Right-Droite	104	51	17	18	3	12	3,06
606	20x140x3 lzda Left-Gauche	140	69	35	20	3	6	2,76
607	20x140x3 Dcha Right-Droite	140	69	35	20	3	6	2,76





## Pernio pala con rodamiento axial

(Familia 45)

(AISI 303- 304L)

Dobradiça em forma de "pá" com rolamento axial  
Flag hinge with axial bearing  
Charnière à pelle avec roulement

Cod.	Medidas Dimensions	A	B	C	ØD	E		
608	18x110x3 lzda Left-Gauche	112	51	17	18	3	12	3,16
609	18x110x3 Dcha Right-Droite	112	51	17	18	3	12	3,16
610	20x150x3 lzda Left-Gauche	146	69	35	20	3	6	2,79
611	20x150x3 Dcha Right-Droite	146	69	35	20	3	6	2,79

