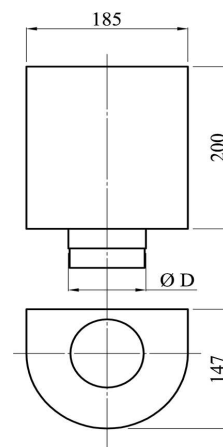


CÓDIGO	CÓDIGO	Ø D	
A 304	A 316	mm	

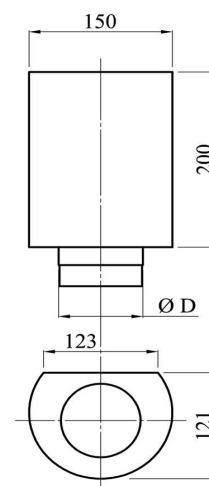
## CAPITEL MEIA LUA

CAP.09	CAP4.09	60,3	-
CAP.10	CAP4.10	76,1	-
CAP.11	CAP4.11	88,9	-
CAP.12	CAP4.12	114,3	-



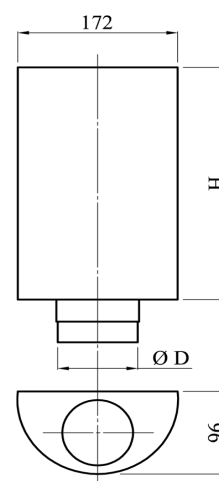
## CAPITEL MEIA LUA FINO

CAPF.09	CAP4.09F	60,3	-
CAPF.10	CAP4.10F	76,1	-
CAPF.11	CAP4.11F	88,9	-



## CAPITEL MEIA LUA LONGO

CAPL2.09	CAPL4.09	60,3	-
CAPL2.10	CAPL4.10	76,1	-
			-



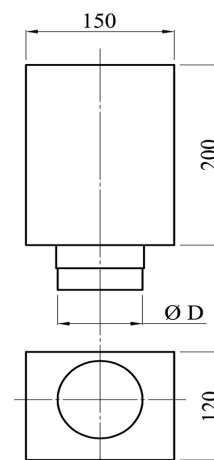
(H) - Sob consulta ( máximo 375 mm )

CÓDIGO	CÓDIGO	Ø D	
A 304	A 316	mm	



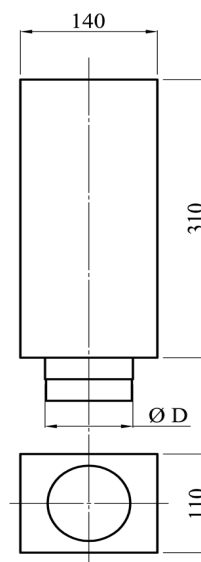
CAPITEL RECTANGULAR			
CAPR2.09	CAPR4.09	60,3	-
CAPR2.10	CAPR4.10	76,1	-
CAPR2.11	CAPR4.11	88,9	-
CAPR2.12	CAPR4.12	**	-

(\*\*) - Sob consulta

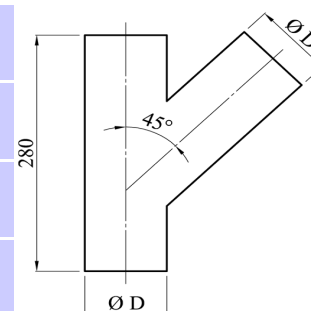


CAPITEL RECTANGULAR LONGO			
CAPRL2.09	CAPRL4.09	60,3	-
CAPRL2.10	CAPRL4.10	76,1	-
CAPRL2.11	CAPRL4.11	88,9	-
CAPRL2.12	CAPRL4.12	**	-

(\*\*) - Sob consulta



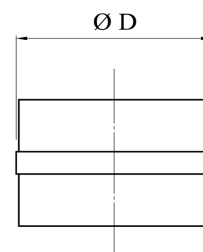
FORQUILHA			
CAPQ2.09	CAPQ4.09	60,3	-
CAPQ2.10	CAPQ4.10	76,1	-
CAPQ2.11	CAPQ4.11	88,9	-
CAPQ2.12	CAPQ4.12	114,3	-



CÓDIGO	CÓDIGO	Ø D	
A 304	A 316	mm	

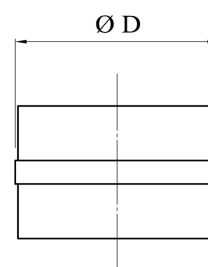
## UNIÃO TUBO-TUBO

PUM.09	PUM4.09	60,3	-
PUM.10	PUM4.10	76,1	-
PUM.11	PUM4.11	88,9	-
PUM.12	PUM4.12	114,3	-



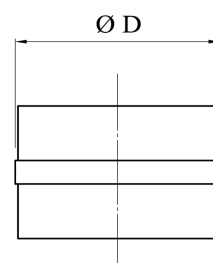
## UNIÃO TUBO-ACESSÓRIO

PUM.09	PUM4.09	60,3	-
PUM.10	PUM4.10	76,1	-
PUM.11	PUM4.11	88,9	-
PUM.12	PUM4.12	114,3	-



## UNIÃO ACESSÓRIO-ACESSÓRIO

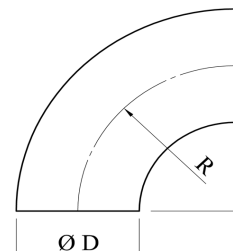
PUCC.09	PUCC4.09	60,3	-
PUCC.10	PUCC4.10	76,1	-
PUCC.11	PUCC4.11	88,9	-
PUCC.12	PUCC4.12	114,3	-



CÓDIGO	CÓDIGO	Ø D	
A 304	A 316	mm	

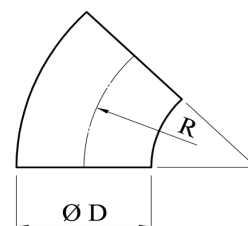
## CURVA R=90°

CI260,3/90	CI460,3/90	60,3	-
CI276,1/90	CI476,1/90	76,1	-
CI288,9/90	CI488,9/90	88,9	-
CI2114,3/90	CI4114,3/90	114,3	-



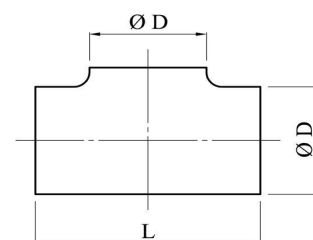
## CURVA R=45°

CI260,3/45	CI460,3/45	60,3	-
CI276,1/45	CI476,1/45	76,1	-
CI288,9/45	CI488,9/45	88,9	-
CI2114,3/45	CI4114,3/45	114,3	-



## TÊ

TI260,3E	TI460,3E	60,3	-
TI276,1E	TI476,1E	76,1	-
TI288,9E	TI488,9E	88,9	-
TI2114,3E	TI4114,3E	114,3	-

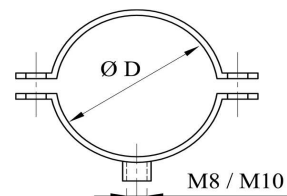


CÓDIGO	CÓDIGO	Ø D	
A 304	A 316	mm	

## ABRAÇADEIRA



F150F2.09	F150F4.09	60,3	-
F150F2.10	F150F4.10	76,1	-
F150F2.11	F150F4.11	88,9	-
F150F2.12	F150F4.12	114,3	-



## PERNO



PERNO	-	T/F8 50X10	-
PERNO10X6	-	T/F10 60X30	-
PERNOM6	-	M6 40X10	-

## TUBO



P260,3X1,2	P460,3X1,2	2"	-
P276,1X1,2	P476,1X1,2	2 1/2"	-
P288,9X1,2	P488,9X1,5 / 1,6	3"	-
P2114,3X1,5	P4114,3X1,5	4"	-

P2 - AISI 304

P4 - AISI 316